

CELINE-2 OFFERS LIGHT QUALITY FOR THE MOST DEMANDING VISUAL TASKS **ESY!**

- > UP TO 4600 LUMENS
- > UP TO 139 LUMENS PER WATT



FOR ESYLUX LIGHT CONTROL ELC, DALI, DALI-2 OR ON/OFF

From human centric lighting and presence and daylight dependent constant light control to simple demand-driven light switching, **CELINE-2** series recessed lights offer:

- Glare- and flicker-free light quality for all forms of light control
- Optional driver sets for maximum compatibility



PERFORMANCE FOR SIMPLICITY

ESYLUX GmbH & Co. KG | sales@esylux.com | www.esylux.com

BRIGHT LIGHTING

For ceiling systems with hidden or visible mounting rails

Plug-and-play connector for system lights featuring ESYLUX Light Control (ELC)

Suitable for use in other lighting systems when using driver sets (available as an optional accessory)

Variants with Tunable White (2700 - 6500 K) featuring SymbiLogic technology for energy-efficient Human Centric Lighting (HCL)

Homogeneous illumination and a long service life due to the backlight layout of the LEDs

Suitable for screen-based workstations in accordance with DIN EN 12464-1 (UGR ≤ 19). No additional accessories required for installation

Flicker-free light for healthy, fatigue-free working

Accessories: Ceiling flush mounting frame and ceiling surface mounting frame

Robust, durable metal housing, front made from a single piece

High-quality PMMA plastic diffuser: DDP OP (micro-prismatic, opal) or DDP TR (micro-prismatic, transparent)



- Energy-efficient lighting with high light quality
- Plug-and-play connector for system lights featuring ESYLUX Light Control (ELC)
- Easy integration for DALI, DALI-2, ON/OFF with ESYLUX driver sets available as an optional accessory
- Powerful tunable white variants for energy-efficient Human Centric Lighting

Together with intelligent sensor-based light management, the LED recessed lights in the CELINE-2 series provide top-quality lighting in workplaces such as offices, educational institutions and medical facilities.

Furthermore, demand-driven control lowers energy costs, reduces CO₂ emissions and ensures that the long service life of the built-in LEDs is fully and reliably utilised.



Tunable White
2700 - 6500 K

System lights featuring ESYLUX Light Control ELC Technology and SymbiLogic technology for energy-efficient Human Centric Lighting

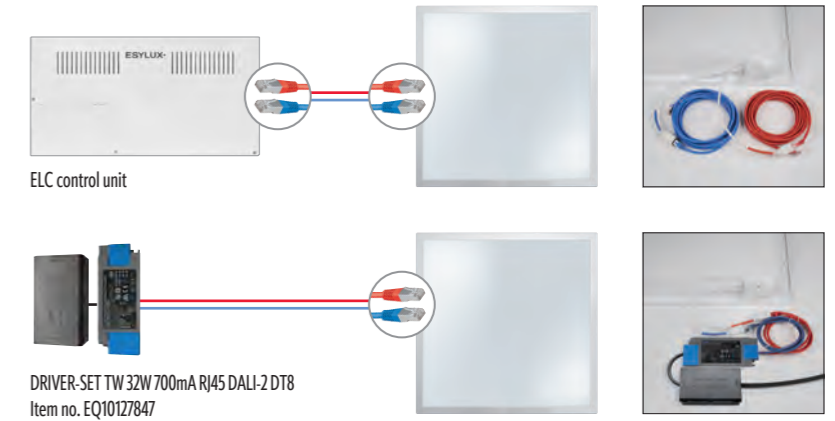
ELC

With accessories:

DALI **DALI-2**

MAXIMUM COMPATIBILITY FOR COMPLETE PLANNING SECURITY

Regardless of which building you are planning for, CELINE-2 offers you the most flexibility when choosing your control system due to its simple plug-and-play RJ45 connector for:



Fixed light colour
3000 K / 4000 K

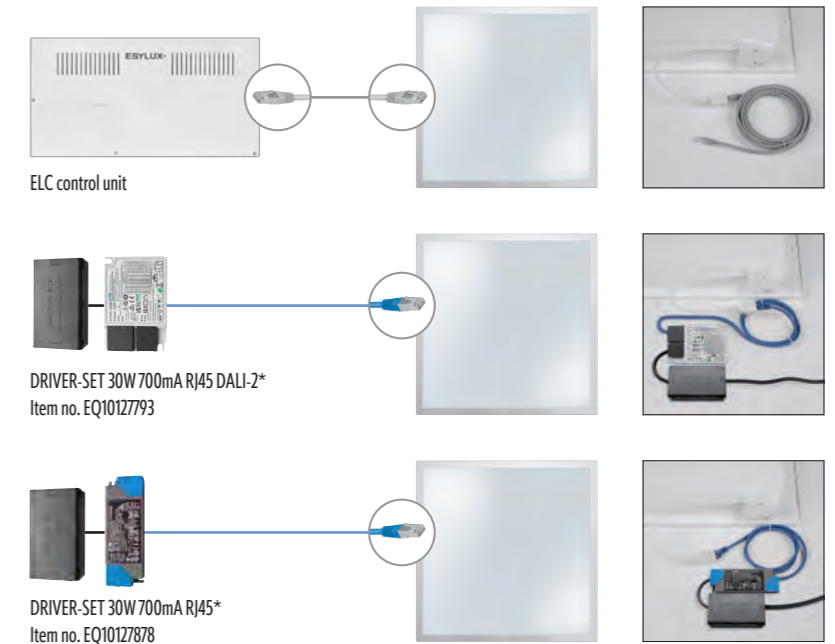
System lights featuring ESYLUX Light Control ELC

ELC

With accessories:

DALI **DALI-2**

ON/OFF



* Also available with WAGO WINSTA® connector (page 10).

HUMAN CENTRIC LIGHTING HCL

WITH TUNABLE WHITE FOR BIOLOGICALLY EFFECTIVE LIGHT

CLASSROOM SOLUTIONS: CONTROL VIA ELC SYSTEM LIGHT WITH SYMBOLOGIC



System lights featuring ESYLUX Light Control ELC can be easily installed, grouped, scaled and networked by taking advantage of their plug-and-play setup. System variants with SymbiLogic technology also automatically provide the best lighting in the workplace due to energy-efficient Human Centric Lighting at an optimum price/performance ratio.

PARTS LIST

Quantity	Product name	Item no.
12	CELINE-2 PNL 600 DDP TR 4200 8TW IP20 ELC	EQ10132353
1	PD-C 360i/24 ELC	EP10427619
1	PD-C 360i/8 ELC	EP10427602
1	SMARTDRIVER-2 TW IR 2C+2x4 ELC	EC10431418
1	SMARTDRIVER-2 TW IR 2C+2x8 ELC	EC10431494
2	CABLE-SET RJ45 10m TW x6	EC10431173
1	CABLE RJ11 10m WH	EC10431524
3	CABLE RJ10-OPEN END 10m WH	EC10431517
1	PUSH BUTTON x8 CLASSROOM ELC	EC10431241
1	ACTUATOR SEMI AUTO C4 DALI	EP10427480

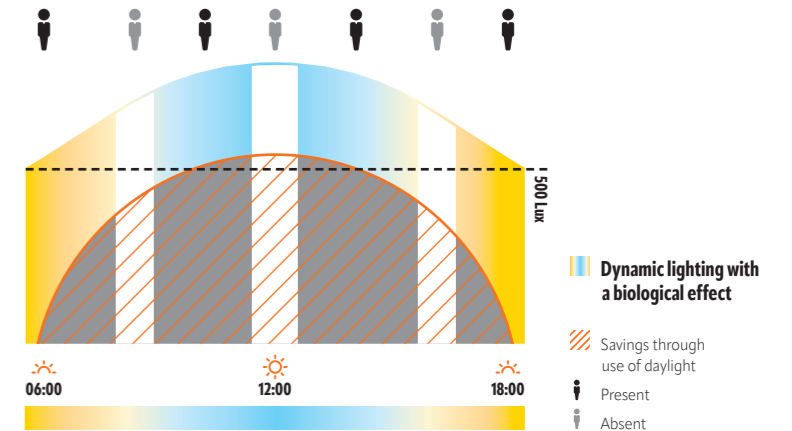
SYMBILOGIC™ for energy-efficient Human Centric Lighting.

ALTERNATIVE: CONTROL VIA DALI-2 SYSTEM WITH SYMBOLOGIC



With the DT8 driver from ESYLUX, the powerful Tunable White variants in the CELINE-2 series can also be used in DALI-2 systems. The system is then intelligently controlled using SymbiLogic via an APC presence detector or an APC DIN rail module from ESYLUX.

SYMBOLOGIC WITH CIRCADIAN CYCLE FOR EDUCATIONAL INSTITUTIONS



More vitality, greater well-being and better health: Human Centric Lighting brings optimal lighting to the workplace using automatic brightness and light colour gradients. SymbiLogic technology and the Tunable White variants of CELINE-2 deliver lighting in an energy-efficient manner.

EFFICIENT USE OF DAYLIGHT

WITH FIXED LIGHT COLOUR FOR CONSTANT LIGHTING CONTROL

CLASSROOM SOLUTIONS: DALI-2 CONTROL VIA APC20 PRESENCE DETECTOR



CELINE-2 PNL 600 DDP TR
4400 840 IP20 ELC

DRIVER-SET 30W 700mA RJ45 DALI-2

PD-C 360bt/8 APC20
PS plus DALI-2

An APC presence detector or an APC DIN rail module for DALI-2 provides cross-room control of up to 16 lighting groups, supported by BMS presence detectors as input devices. In classrooms, this enables the lighting of individual room zones to be customised to suit particular applications and overridden by scene in each lesson.



PARTS LIST

Quantity	Product name	Item no.
12	CELINE-2 PNL 600 DDP TR 4400 840 IP20 ELC	EQ10132346
12	DRIVER-SET 30W 700mA RJ45 DALI-2	EQ10127793
1	PD-C 360bt/24 APC20 PS plus DALI-2	EP10428111
1	PD-C 360/24 BMS DALI-2	EP10428210
1	PD-C 360/8 BMS DALI-2	EP10428203



ALTERNATIVE: DALI BROADCAST WITH DUO DALI PRESENCE DETECTORS



CELINE-2 PNL 600 DDP TR
4400 840 IP20 ELC

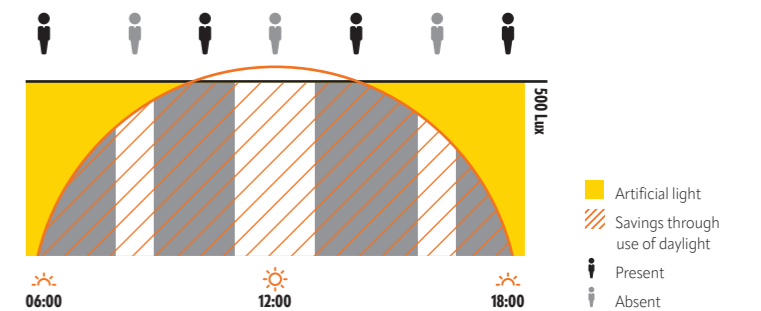
DRIVER-SET 30W 700mA RJ45
WAGO WINSTA DALI-2

PD-C 360i/24 DUO DALI
WAGO WINSTA CodeI

As an alternative option that provides a simple introduction to DALI technology, DUO DALI presence detectors in the COMPACT series control two light channels in broadcast mode.



PRESENCE AND DAYLIGHT DEPENDENT CONSTANT LIGHT CONTROL



Automatic adjustment of artificial light to the available daylight combined with presence dependent light switching: constant light control creates optimum lighting conditions with a fixed light colour – not to mention high energy efficiency. The CELINE-2 series offers variants with 3000 K or 4000 K for this purpose.

DEMAND-DRIVEN ON/OFF

WITH FIXED LIGHT COLOUR FOR EASY SWITCHING

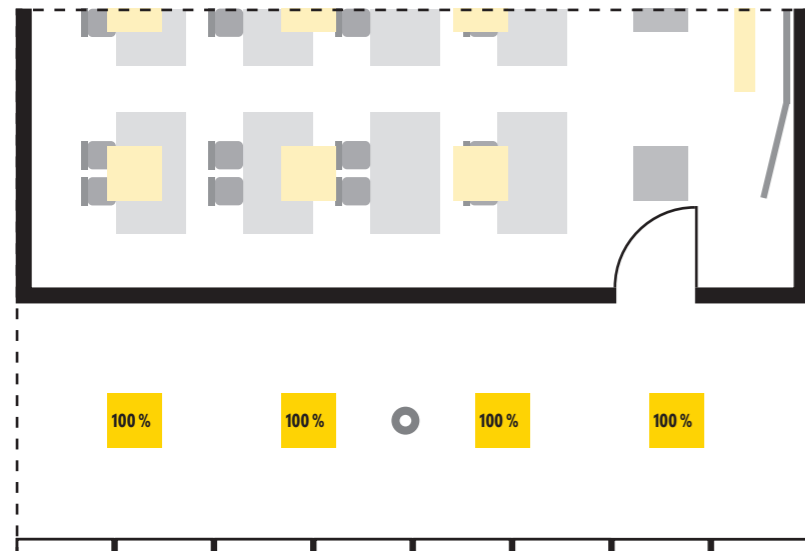
CORRIDOR SOLUTIONS: CONTROL VIA SWITCHING COMPACT PRESENCE DETECTOR



CELINE-2 PNL 600 DDP TR
4400 840 IP20 ELC

DRIVER-SET 30W 700mA RJ45

PD-C 360i/24



With its two-piece housing for easy installation and numerous variants for multi-channel light and HVAC control, COMPACT is one of the most successful ESYLUX series. Even when it comes to simple switching, the detectors provide reliable quality – for greater energy efficiency in corridors, for example.

PARTS LIST

Quantity	Product name	Item no.
4	CELINE-2 PNL 600 DDP TR 4400 840 IP20 ELC	EQ10132346
4	DRIVER-SET 30W 700mA RJ45	EQ10127878
1	PD-C 360i/24	EP10428067

ALTERNATIVE: CONTROL VIA FLAT PRESENCE DETECTORS



CELINE-2 PNL 600 DDP TR
4400 840 IP20 ELC

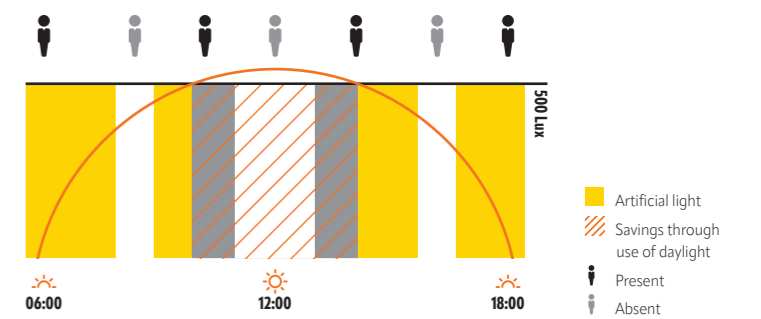
DRIVER-SET 30W 700mA RJ45

PD-FLAT 360i/8
LARGE ROUND BK

ESYLUX offers a wide range of other options for switching corridor lighting in various designs, but all with premium sensor quality: For example, devices from the COMPACT MINI, BASIC or BASIC EXPRESS series – or the FLAT series.



PRESENCE AND DAYLIGHT DEPENDENT LIGHT SWITCHING

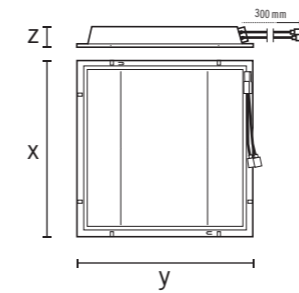


Use energy only when it is really needed: Even simple presence and daylight dependent light switching provides considerable savings. It also reduces the environmental problem of light pollution at night and its energy efficiency contributes to reducing global CO₂ emissions.

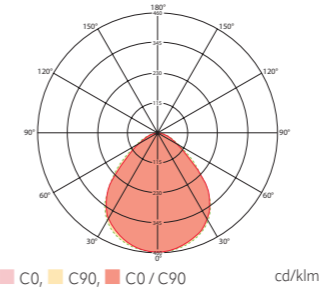
PRODUCT OVERVIEW

Product group / product name	Item no.	Light colour (IEC 1231)	Luminous flux	Rated output P	Luminous efficacy	Unified Glare Rating	Glare suppression	Diffusor	Protection type	Control system	Energy efficiency class	Dimensions (mm)	Core portfolio	New
2700 - 6500 K / 600 x 600 mm / 30 W														
CELINE-2 PNL 600 DDP OP 3800 8TW IP20 ELC (white, similar to RAL 9016)	EQ10132322	8TW	4000 lm	33 W	121 lm/W	< 19	DDP	OP	IP20	ELC	LED EEL E	X 596, Y 596, Z 65	•	★
CELINE-2 PNL 600 DDP TR 4200 8TW IP20 ELC (white, similar to RAL 9016)	EQ10132353	8TW	4400 lm	33 W	133 lm/W	< 19	DDP	TR	IP20	ELC	LED EEL E	X 596, Y 596, Z 65	•	★
3000 K / 600 x 600 mm / 30 W														
CELINE-2 PNL 600 DDP OP 3600 830 IP20 ELC (white, similar to RAL 9016)	EQ10132308	830	3900 lm	33 W	118 lm/W	< 19	DDP	OP	IP20	ELC	LED EEL E	X 596, Y 596, Z 65	•	★
CELINE-2 PNL 600 DDP TR 4000 830 IP20 ELC (white, similar to RAL 9016)	EQ10132339	830	4300 lm	33 W	130 lm/W	< 19	DDP	TR	IP20	ELC	LED EEL E	X 596, Y 596, Z 65	•	★
4000 K / 600 x 600 mm / 30 W														
CELINE-2 PNL 600 DDP OP 4000 840 IP20 ELC (white, similar to RAL 9016)	EQ10132315	840	4200 lm	33 W	127 lm/W	< 19	DDP	OP	IP20	ELC	LED EEL E	X 596, Y 596, Z 65	•	★
CELINE-2 PNL 600 DDP TR 4400 840 IP20 ELC (white, similar to RAL 9016)	EQ10132346	840	4600 lm	33 W	139 lm/W	< 19	DDP	TR	IP20	ELC	LED EEL E	X 596, Y 596, Z 65	•	★

PRODUCT TYPES



LIGHT DISTRIBUTION



Product group / product name	Item no.	Product description	Dimensions (mm)	Core portfolio	New
Accessories					
Mounting					
MOUNTING FRAME 600 FM WH	EQ10113086	Ceiling flush mounting frame 600 for recessed lights	X 635.4, Y 635, Z 48.2	•	
MOUNTING FRAME 600/625 SM WH	EQ10113468	Ceiling surface mounting frame 600/625 for recessed lights	X 622.2, Y 627, Z 100	•	
Electrical accessories					
DRIVER-SET 30W 700mA RJ45	EQ10127878	ON/OFF driver set with plug-and-play connection for CELINE-2 with fixed light colour	X 119, Y 42, Z 28	•	
DRIVER-SET 30W 700mA RJ45 DALI-2	EQ10127793	DALI-2 driver set with plug-and-play connection for CELINE-2 with fixed light colour	X 103, Y 68, Z 31	•	
DRIVER-SET 30W 700mA RJ45 WAGO WINSTA® DALI-2	EQ10127809	DALI-2 driver set with plug-and-play connection for CELINE-2 with fixed light colour	X 103, Y 68, Z 31	•	
DRIVER-SET 30W 700mA RJ45 WIELAND GST DALI-2	EQ10127816	DALI-2 driver set with plug-and-play connection for CELINE-2 with fixed light colour	X 103, Y 68, Z 31	•	
DRIVER-SET TW 32W 700mA RJ45 DALI-2 DT8	EQ10127847	DALI-2 DT8 driver set with plug-and-play connection for CELINE-2 with Tunable White	X 117, Y 46, Z 29	•	
DRIVER-SET TW 32W 700mA RJ45 WAGO WINSTA® DALI-2 DT8	EQ10127830	DALI-2 DT8 driver set with plug-and-play connection for CELINE-2 with Tunable White	X 117, Y 46, Z 29	•	
DRIVER-SET TW 32W 700mA RJ45 WIELAND GST DALI-2 DT8	EQ10127823	DALI-2 DT8 driver set with plug-and-play connection for CELINE-2 with Tunable White	X 117, Y 46, Z 29	•	
Remote control					
ESY-Pen	EP10425356	ESY-Pen and ESY-App, two tools for every task: (1) Parameterisation, (2) remote control, (3) light measurement, (4) project management	X 166, Y 24, Z 21.5	•	



OUR PLANNING SUPPORT FOR YOUR PROJECT

It's really important to us that our intelligent automation and lighting solutions are easy to implement:

- Our room parts list allows you to conveniently and clearly put together all of our components online
- Our BIM portal gives you access to all 2D and 3D CAD product data in our portfolio
- Our experts are happy to offer you with personalised advice

Contact us at www.esylux.com

www.esylux.com

Photo credits:
iStock: 974684318, 935738260, 135351244

The Bluetooth® word mark and logos are registered trademarks owned by Bluetooth SIG, Inc.

For delivery times and further information on our products, please refer to our website.

© Copyright 2025

30.09.2025